

Freddy Frosted's

Box of donuts and mug of coffee

Supplies-

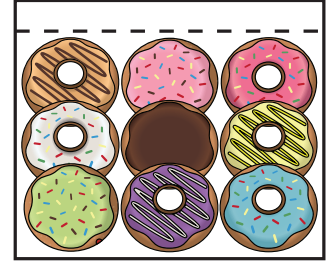
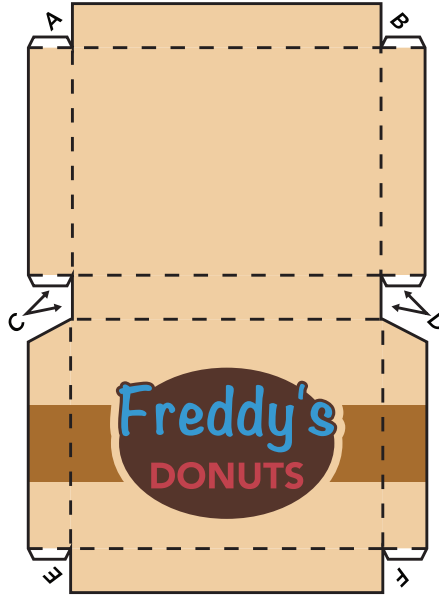
Printer
Thick Paper (Cardstock or Matte)
Scissors or Cutting tool
Glue or Tape

If under the age of 18, parental guidance is advised when using scissors or dangerous materials

Instructions-

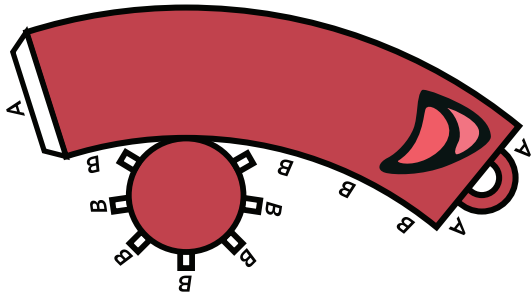
1. Cut out each piece along outer edges of all the individual pieces
2. Fold each piece along the dashed lines, making sure to fold straight
3. After all pieces are cut out and folded, glue or tape together the flaps to the matching area (A to A, B to B, etc.).
4. Accessorize your very own Freddy Frosted Whiffer Sniffer character!

Box of Donuts



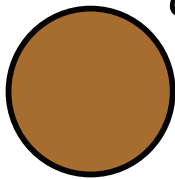
Insert the donuts into donut box ramped upwards towards the back

Mug of Coffee



Fold handle back and tape or glue the flap to inside of the mug.

Optional: After putting together the mug of coffee, you can insert the circle into the mug to make it look like coffee is inside the mug.



Optional:
Coffee

Optional: Donuts Separate

