

# TONY PEPPERONI'S

## BRICK PIZZA OVEN and PIZZA BOX

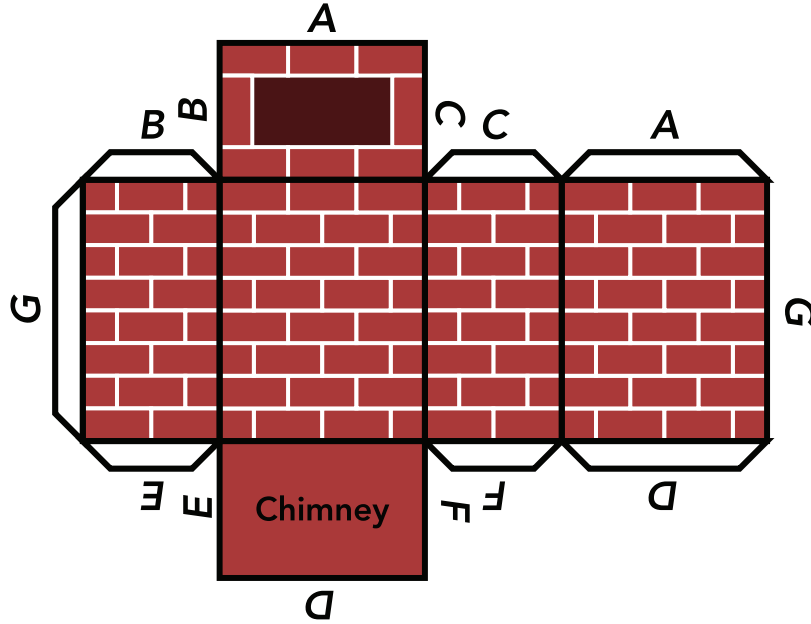
### Supplies-

Printer  
Thick Paper (Cardstock or Matte)  
Scissors or Cutting tool  
Glue or Tape

*If under the age of 18, parental guidance is advised when using scissors or dangerous materials*

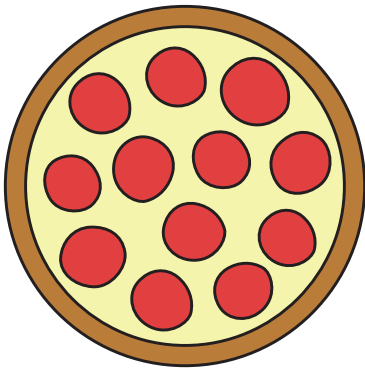
### Instructions-

1. Cut out each piece along outer edges of all the individual pieces
2. Fold each piece along the dashed lines, making sure to fold straight
3. After all pieces are cut out and folded, glue or tape together the flaps to the matching area (A to A, B to B, etc.).
4. Accessorize your very own Tangerina Ballerina Whiffer Sniffer character!

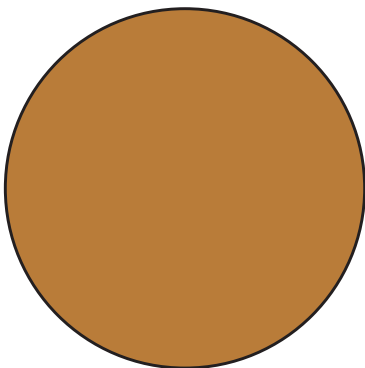


## Pizza for inside of Pizza Box

Pizza Top

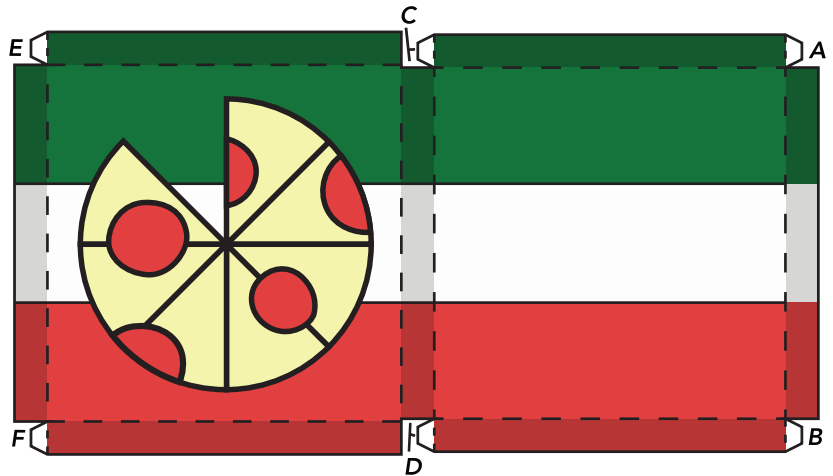


Pizza Bottom

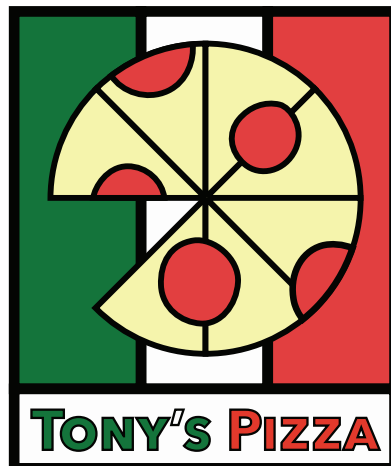


Glue Pizza Bottom piece to bottom of Pizza Top piece

Pizza Box



Optional Pizza Sign



# Pizza Oven

