

JIMMY S'more's

s'more ingredients and campfire

Supplies-

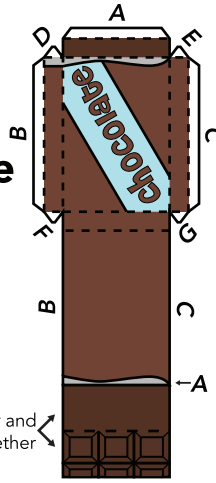
- Printer
- Thick Paper (Cardstock or Matte)
- Scissors or Cutting tool
- Glue or Tape

If under the age of 18, parental guidance is advised when using scissors or dangerous materials

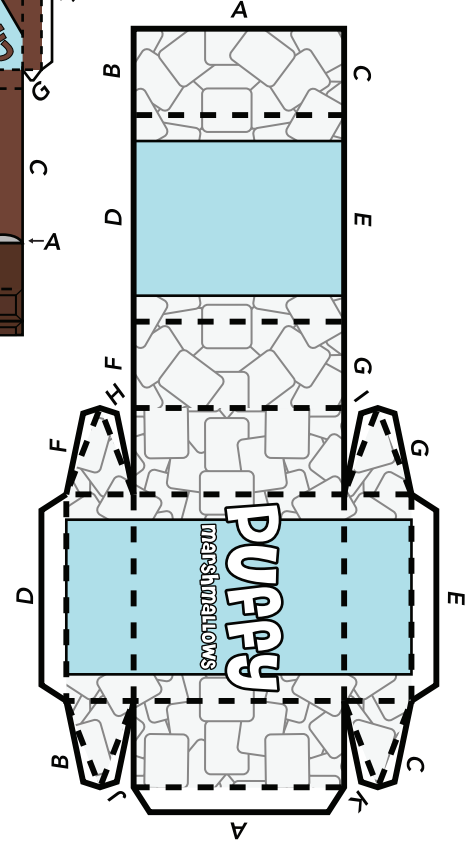
Instructions-

1. Cut out each piece along outer edges of all the individual pieces
2. Fold each piece along the dashed lines, making sure to fold straight
3. After all pieces are cut out and folded, glue or tape together the flaps to the matching area (A to A, B to B, etc.)
4. Accessorize your very own Jimmy S'more Whiffer Sniffer character!

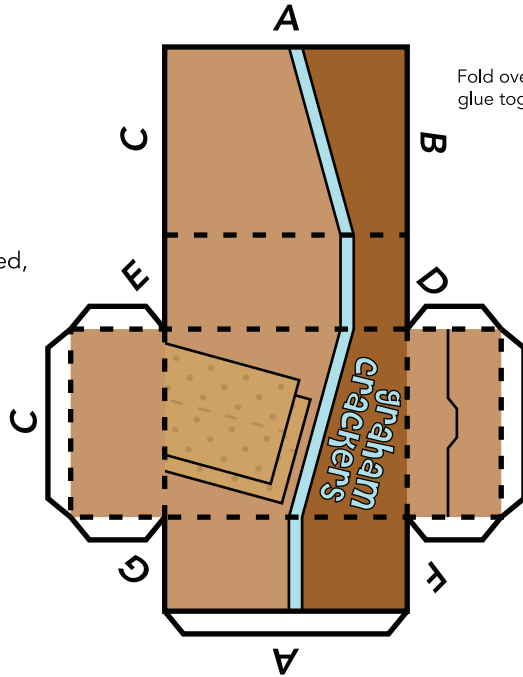
Bar of Chocolate



Bag of Marshmallows

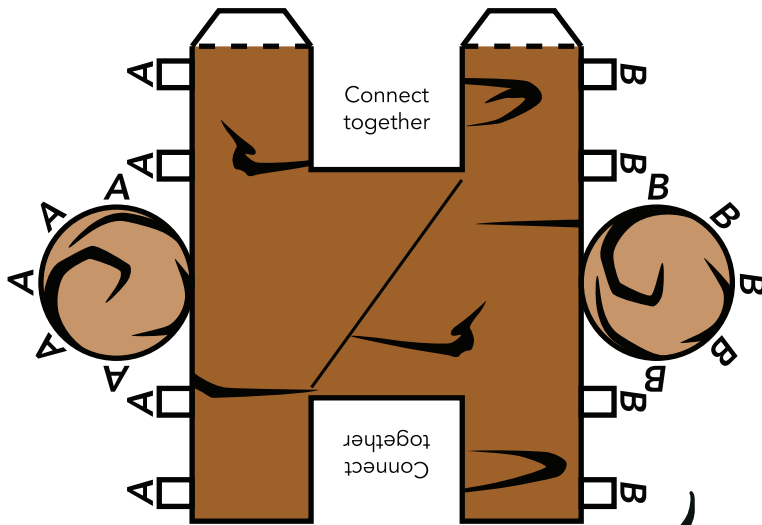


Box of Graham Crackers

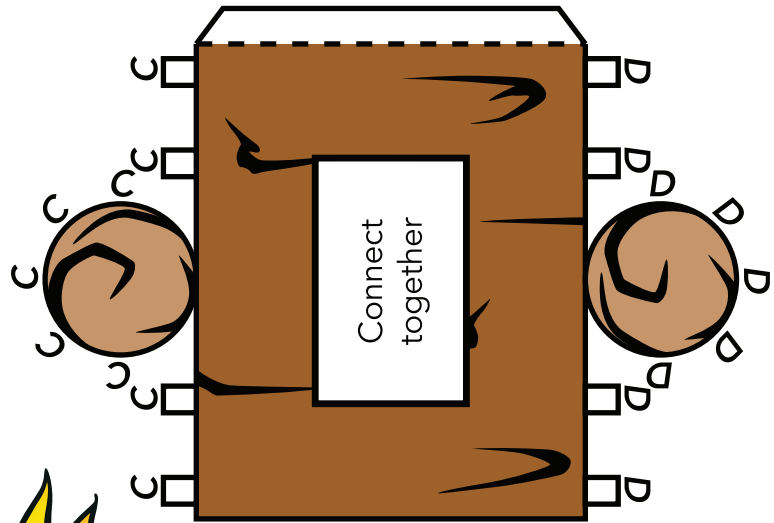


Fold over and glue together

Log 1



Log 2



Fire



Insert into slit in Log 1

Making the Campfire

After all pieces are cut out, and glued/taped together, connect Log 1 and Log 2 together via the 2 square holes to make the logs crossed. Then insert the fire into the slit on the top of Log 1.