

PEPPERMINT PAULIE'S

MILK, egg nog, and
a candy cane

Supplies-

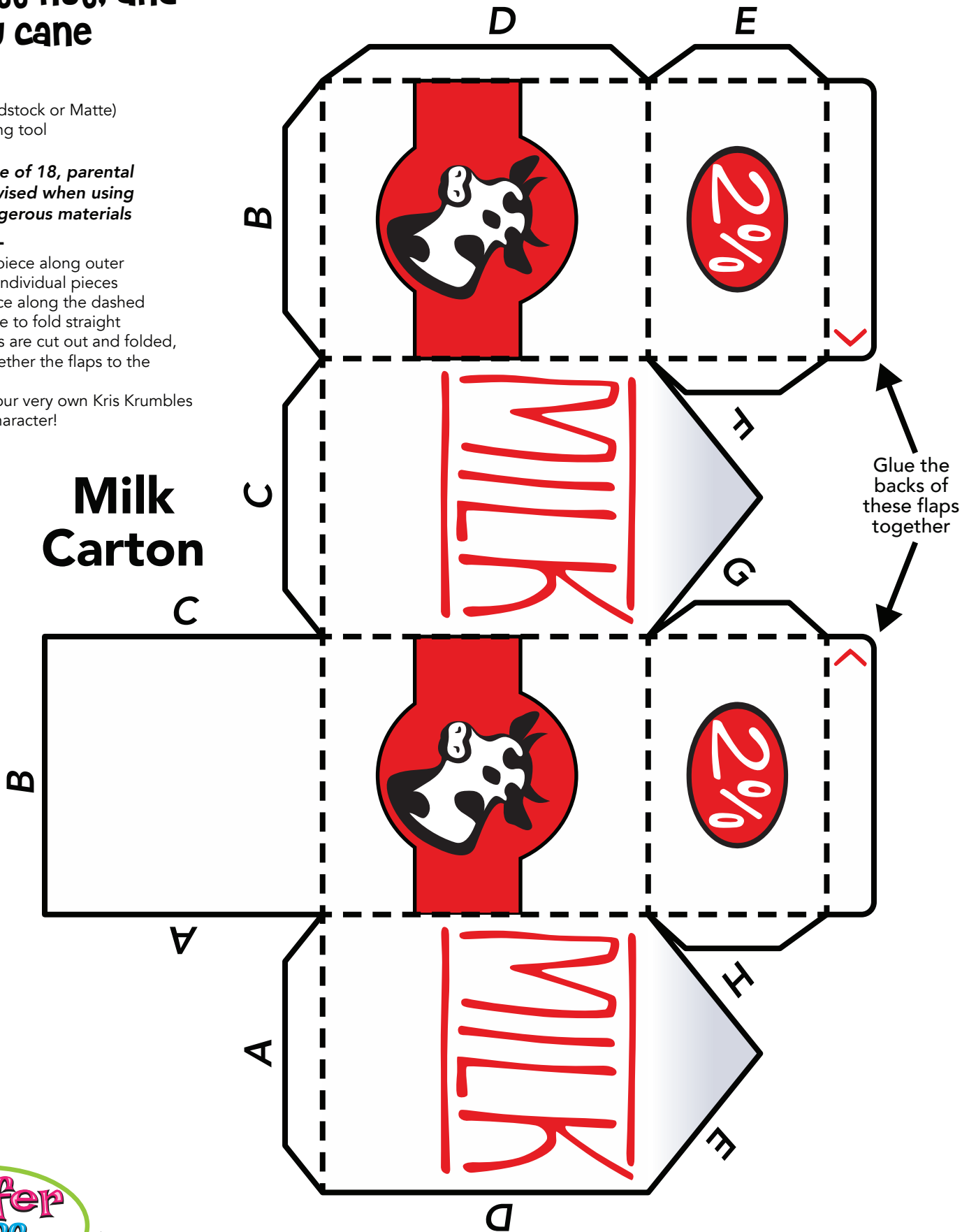
Printer
Thick Paper (Cardstock or Matte)
Scissors or Cutting tool
Glue or Tape

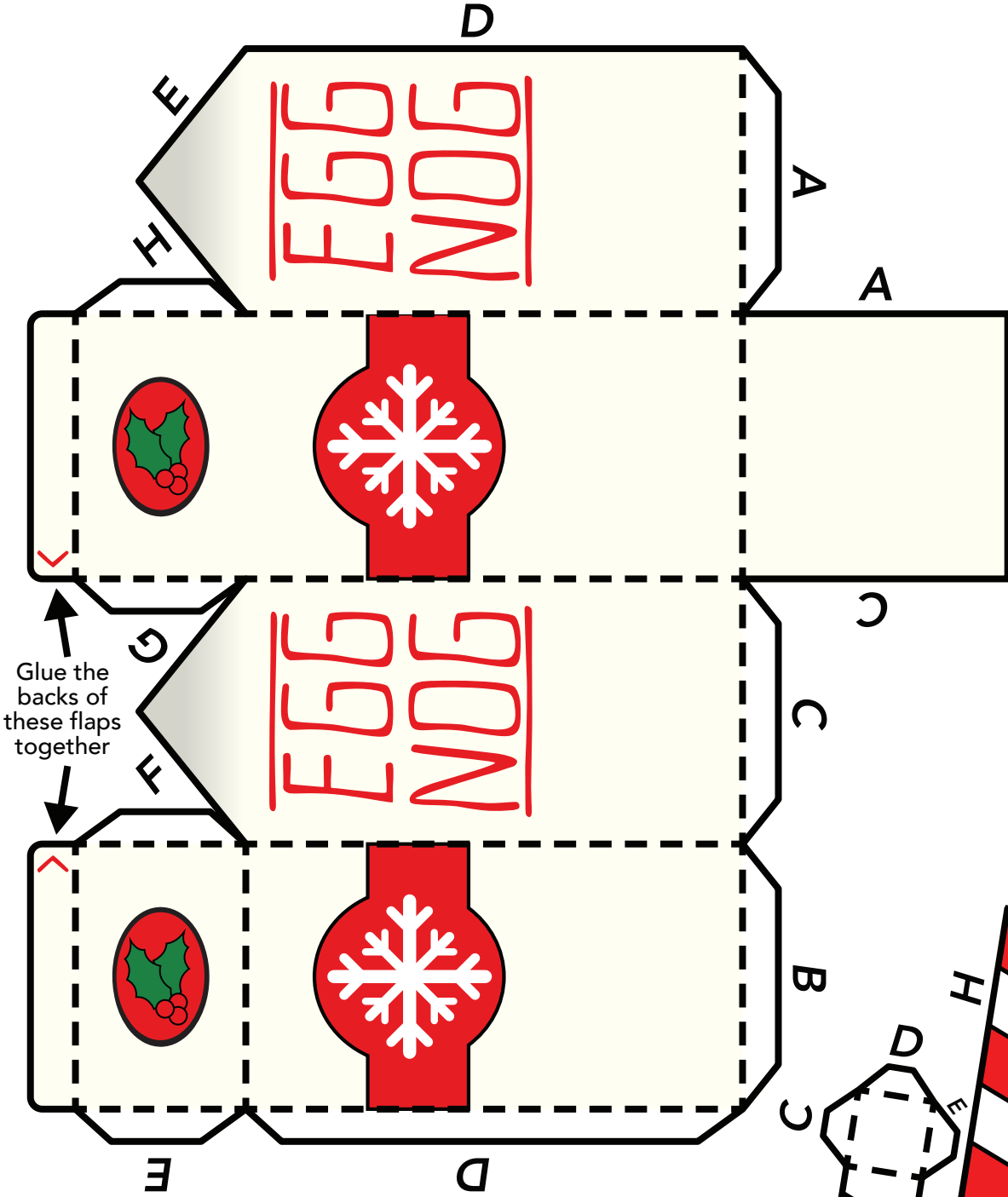
If under the age of 18, parental guidance is advised when using scissors or dangerous materials

Instructions-

1. Cut out each piece along outer edges of all the individual pieces
2. Fold each piece along the dashed lines, making sure to fold straight
3. After all pieces are cut out and folded, glue or tape together the flaps to the matching area.
4. Accessorize your very own Kris Krumbles Whiffer Sniffer character!

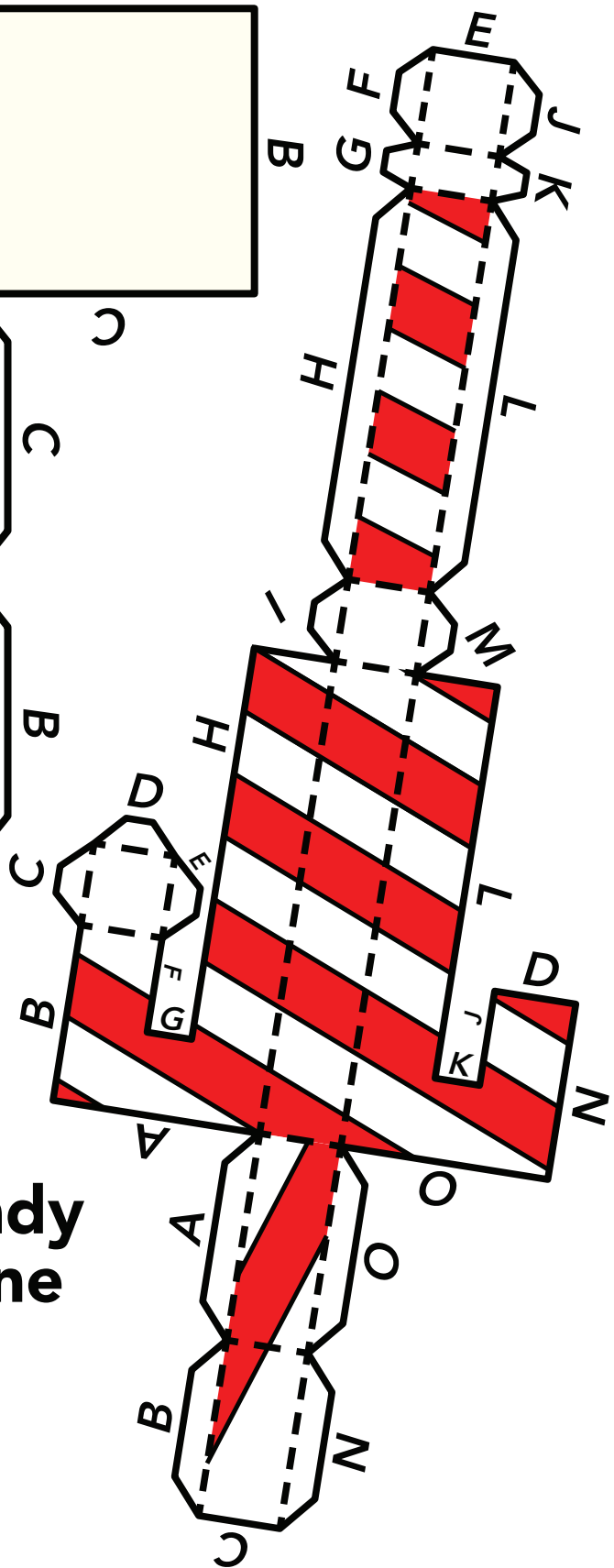
Milk
Carton





Glue the backs of these flaps together

Egg Nog Carton



Candy Cane